



Natural
Environment
Research Council



Northumbria
University
NEWCASTLE

“Playing around” with Healthy City Design 2021 to achieve additional outcomes.

Alister Scott

Oliver Jones Ryder Architecture + Marcus Grant Cities and Health

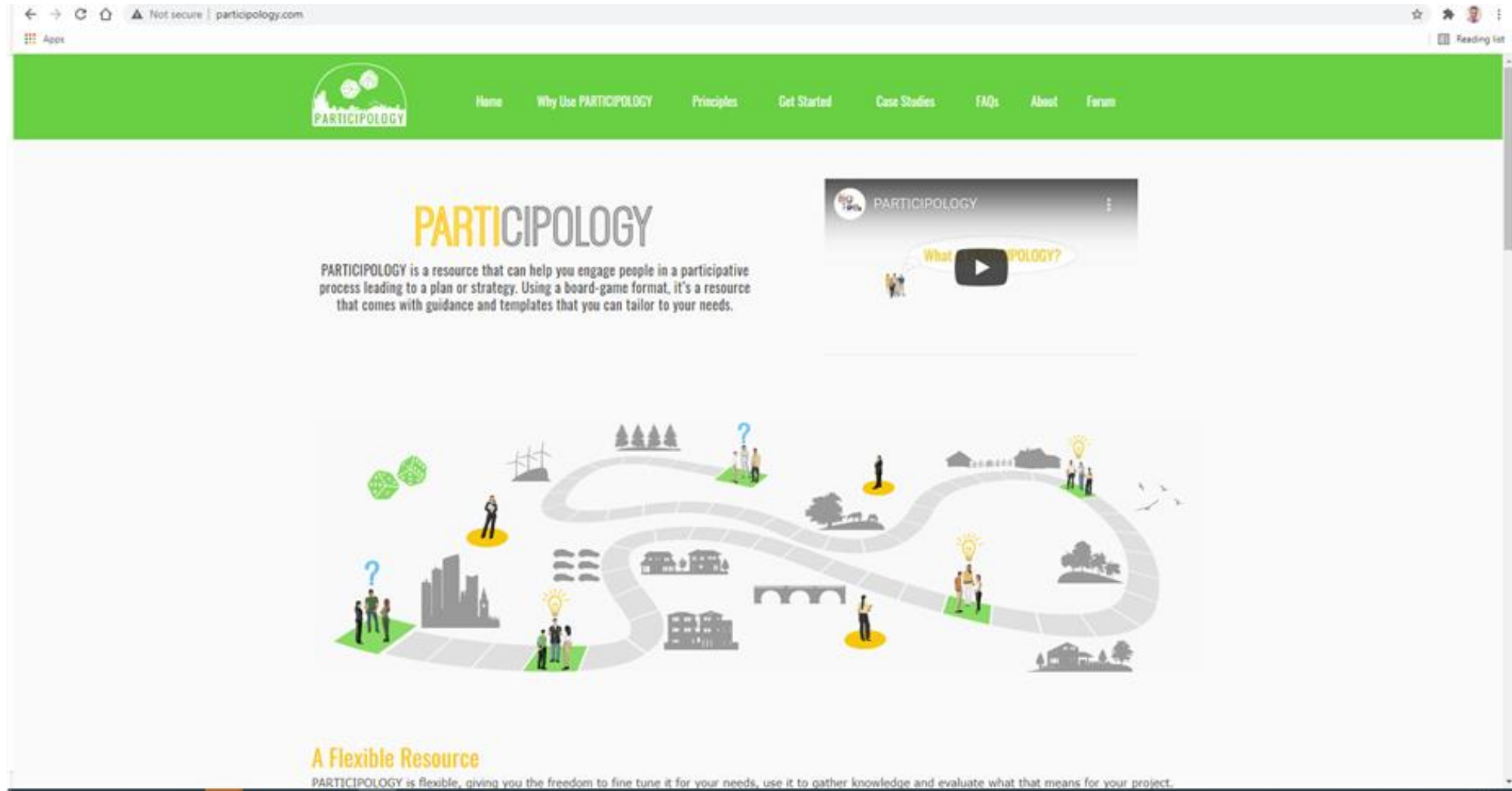
**HEALTHY
CITY DESIGN
INTERNATIONAL**
RESEARCH • POLICY • PRACTICE
11-14 OCTOBER 2021

E: info@salus.global

BACK FROM THE BRINK:
DESIGNING FOR CLIMATE, COMMUNITY
AND SOCIAL VALUE



Introduction



The screenshot shows the homepage of the PARTICIPOLOGY website. The browser address bar indicates the URL is participology.com. The website features a green navigation bar with the following menu items: Home, Why Use PARTICIPOLOGY, Principles, Get Started, Case Studies, FAQs, About, and Forum. The main content area includes the PARTICIPOLOGY logo, a descriptive paragraph, a video player, a large infographic, and a section titled "A Flexible Resource".

PARTICIPOLOGY

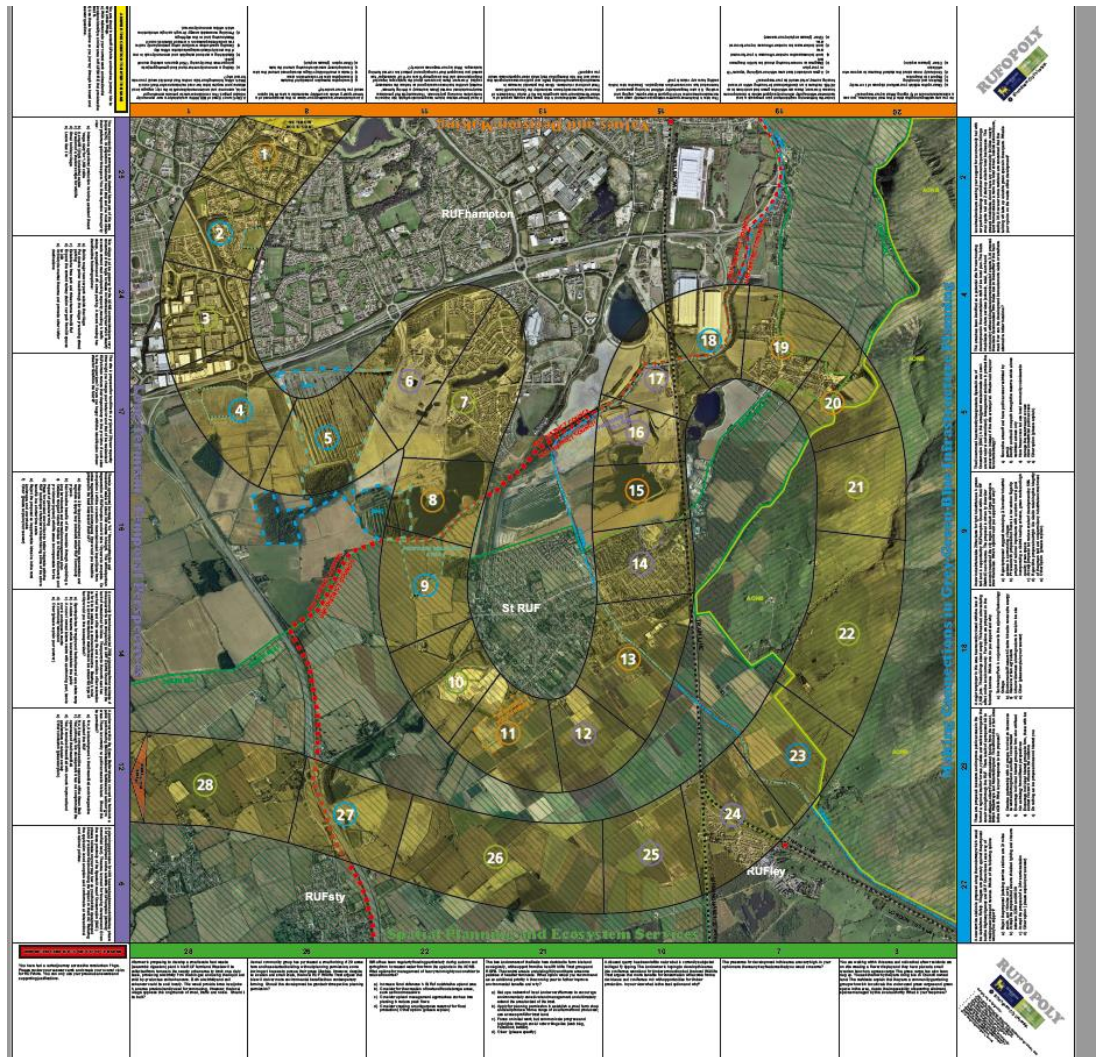
PARTICIPOLOGY is a resource that can help you engage people in a participative process leading to a plan or strategy. Using a board-game format, it's a resource that comes with guidance and templates that you can tailor to your needs.

What PARTICIPOLOGY?

A Flexible Resource

PARTICIPOLOGY is flexible, giving you the freedom to fine tune it for your needs, use it to gather knowledge and evaluate what that means for your project.

Welcome to RUFshire and RUFopoly 1 hour



AIM: to appreciate the complexity and disintegration of rural urban fringe through their own journey identifying how it can be better planned and managed as a place in its own right

DESIGN: questions designed from researcher challenges and board reflects urban – rural system

PLAY thro die & land on square and answer questions in group. Record answer and justification (x4 questions)

REFLECTION create vision for RUFshire based on previous answers alone

Identify barriers and opportunities for realizing vision.

Sample questions (based on research challenges encountered)

- A City Council Grant of £80,000 is available for a new community-initiated project. The conditions were: to provide something of social, economic and environmental benefit to the city; engage local citizens; be low-cost maintenance for the Council. Which of the following four bids on the final short-list would you vote for and why?
 - a) Getting a community orchard and food-growing projects going across the city using 1/5 of space in existing council parks.
 - b) Establishing a car-boot sale pitch and community cafe in one of the socially disadvantaged suburbs of the city.
 - c) Creating a peri-urban woodland using predominantly native tree and shrub species on 4 acres of derelict Council Warehousing land on the city fringe.
 - d) Providing renewable energy through a single wind turbine which will be community owned.
- As you are walking along the side of the road in this area, you see a substantial amount of fly tipping. What is your response?
 - a) Clear up the rubbish yourself and dispose of it correctly
 - b) Walk on and do nothing
 - c) Report it to the police
 - d) Continually moan about the state of the area to anyone who will listen
 - e) Other (please explain)

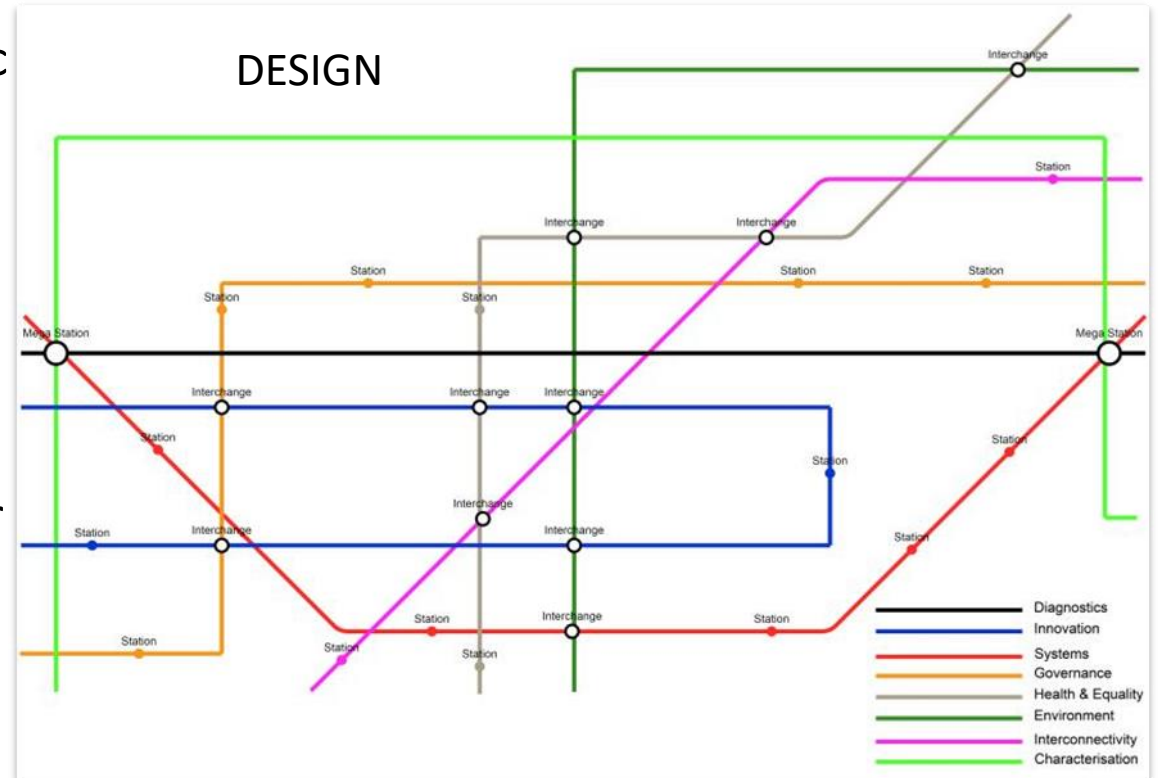
Urban Placemakers 1 hour

AIM: Understand Birmingham as a set of interconnected systems of people, infrastructure and city services to enhance urban living through a holistic approach to policy development and implementation.

DESIGN: Tube map to capture different research strands. Questions based on researcher collaborations and projects

PLAY Asked questions about research challenges/projects. Some are mono-thematic (station), some cover multiple themes (interchange or megastation). Have to capture all themes and stations

REFLECTION from answers identify common principles for creating more joined up thinking, working and governing practices (use previous answers). Identify the current barriers and opportunities to achieving this integration



Example questions (based on researcher findings)

○ INTERCHANGE QUESTION ○

INNOVATION  GOVERNANCE

Identify at least one innovation or alternative to practice introduced by Birmingham City Council that comes from a citizen or group of citizens.

○ MEGA STATION QUESTION ○

DIAGNOSTICS  CHARACTERISATION
 SYSTEMS

What are the top five BEST things about Birmingham and why?

Are any of them inter-connected or inter-dependent?

Key benefits of games

- Random nature of dice dictating agendas and questions
- Hypothetical “safe space” for a range of views to be aired
- “Fun” nature of engagement activity generates “flow”
- Challenges people to operate out of usual roles and areas

BUT is subject to same rules of good participatory approaches



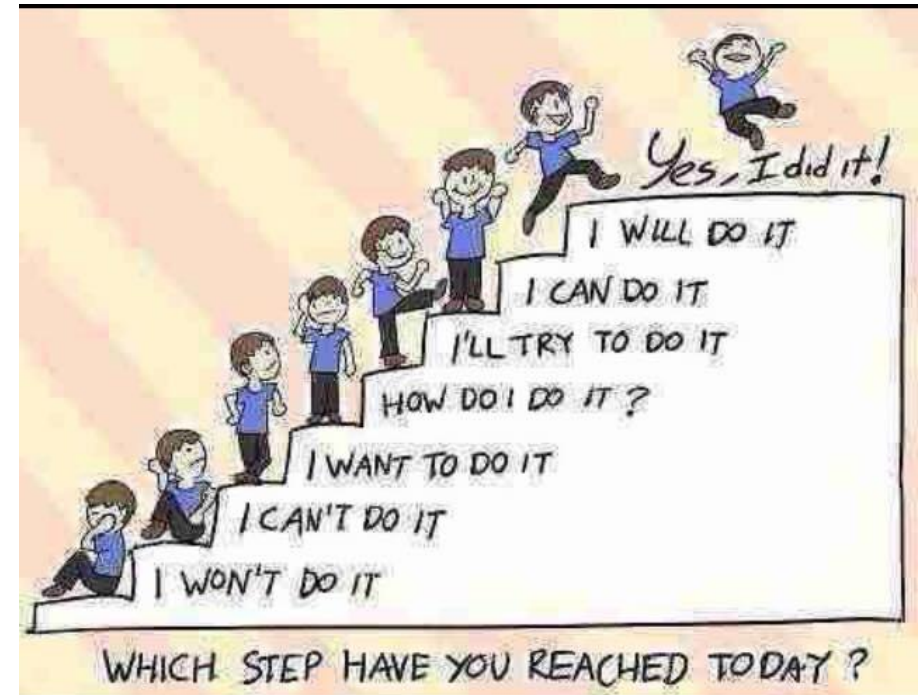
What can we achieve today?

- AIM/GOAL
- DESIGN CONCEPT
- PLAY
- POST PLAY REFLECTION



We don't learn from experiences, we learn from reflecting on the experience.

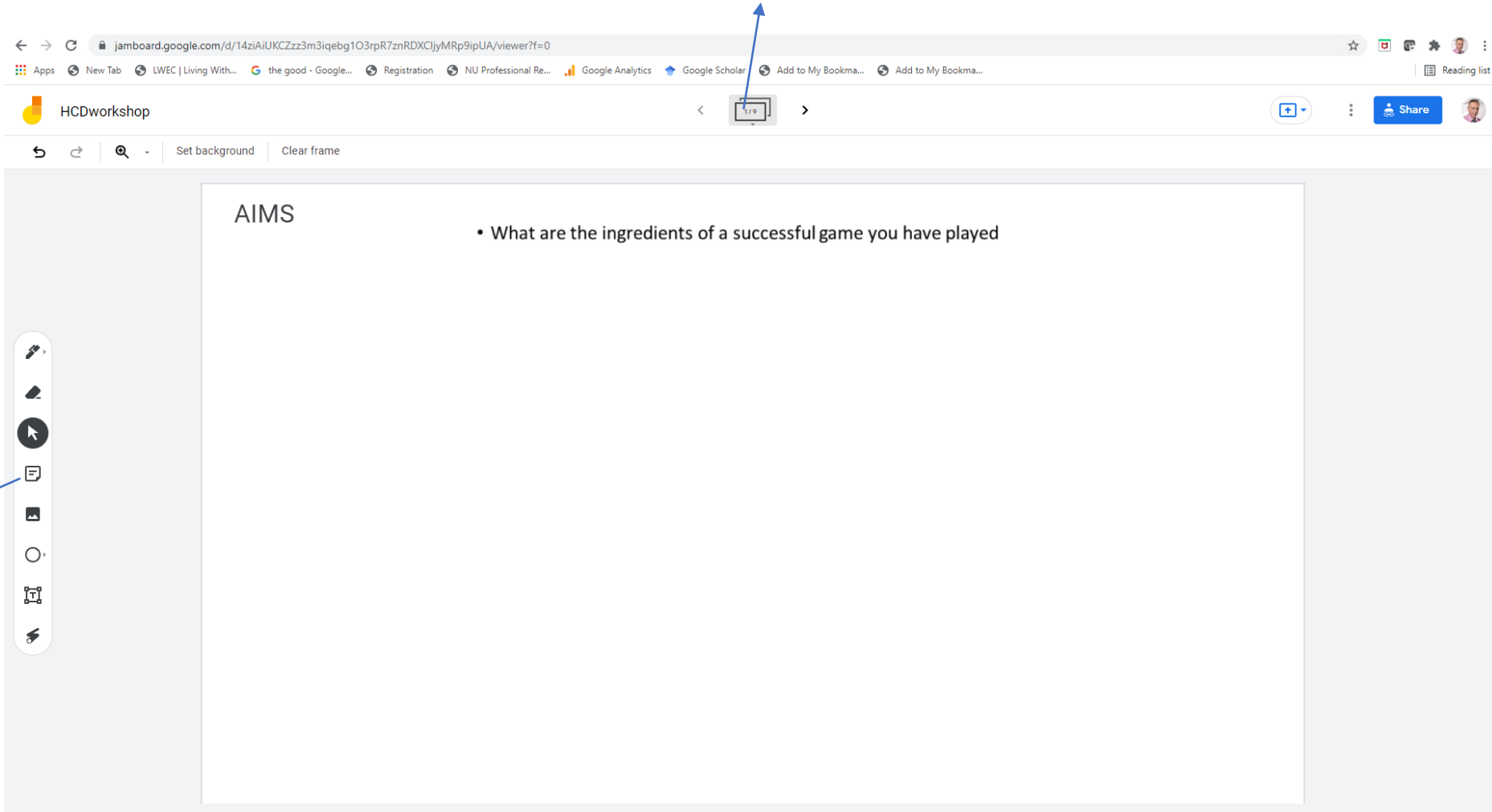
-John Dewey



WHICH STEP HAVE YOU REACHED TODAY?

Lets switch to google jamboard to get your input

Slide navigation



Sticky note

Stage 1 : AIMS AND GOALS 10 minutes

- What are the ingredients of a successful game you have played
- What experiences from HCD21conference theme can you feed into a game based approach?
- What is the goal of the game (added value)?
- What kind of game do YOU want?



Stage2 DESIGN CONCEPT 10 minutes

- What visual concept/metaphor can best capture HCD21 goals to motivate people to engage with a game format?
- How can a board be designed from the above to provide an exciting game format?



Stage 3 PLAY and POST PLAY REFLECTION 10 minutes

- How does the game actually get played (60-75 minute limit)?
- What is the best reflective activity to capture the value of the game play



Further steps 2 mins

- Capture this information and turn into a draft game
- Further email iteration and one further TEAMS meeting to capture questions and finalise game
 - If interested in developing questions
 - If interested in game design
- Please email me
Alister.scott@northumbria.ac.uk

